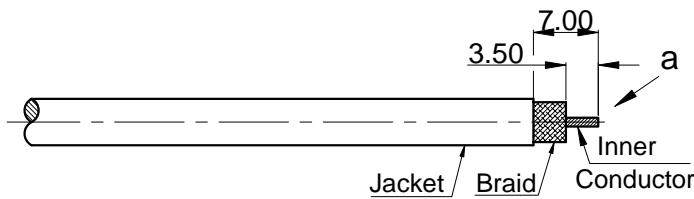
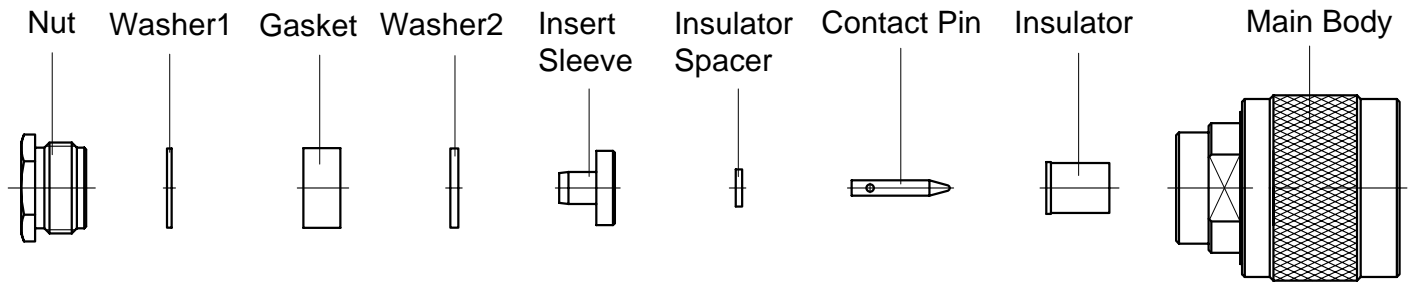
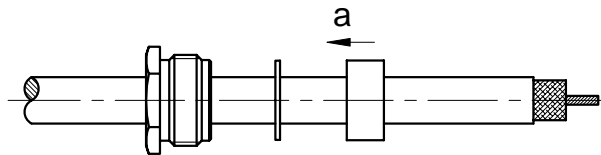


P/N: 50-03-4M21-106 (REV. A)

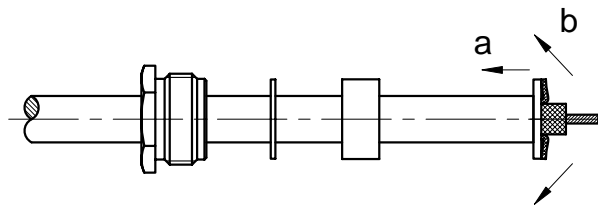
Description: N Straight Male Clamp for RG142/RG223/RG58/LMR195 Cable

**STEP 1**

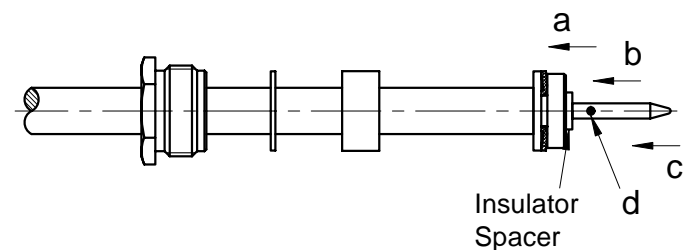
- a. Strip the cable according to the dimensions as shown.

**STEP 2**

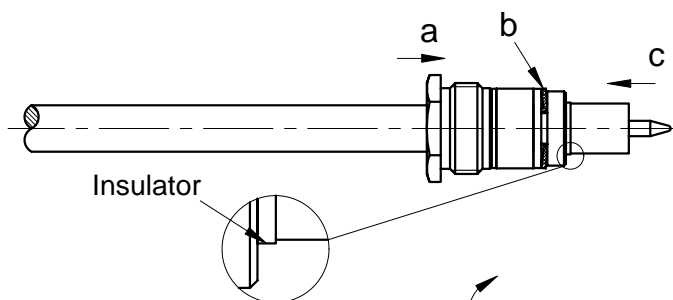
- a. Slide the Fastening Nut, Washer1 (thinner), Gasket onto the cable in order as show.

**STEP 3**

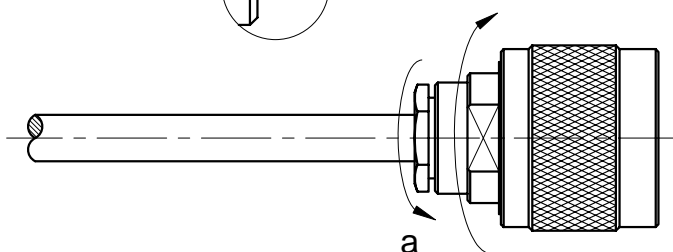
- a. Slide the Washer2 (thicker) onto the cable's braid.
- b. Fan the braid.

**STEP 4**

- a. Keep the Washer2 (thicker) onto the cable's braid, push the Insert Sleeve into the cable until the bottom flush with the cable's dielectric.
- b. Slide the Insulator Spacer onto the cable's center conductor.
- c. Slide the Contact Pin onto the cable's center conductor until it stops.
- d. Solder the Contact Pin onto the cable.

**STEP 6**

- a. Slide the Gasket, Washer1 (thinner) and Fastening Nut until they stops (keep the Insert Sleeve still).
- b. Cut the excess of braid if nessary.
- c. Slide the Insulator onto the Contact Pin (Attention the direction of the Insulator).

**STEP 7**

- a. Slide the assembly into the Main Body, then screw the Fastening Nut into the Main Body with wrench.